



MONTHLY MEMBERSHIP PROGRESS REPORT

District 24 D

Results as of: 11/30/2017

GMT: CINDY GREGG

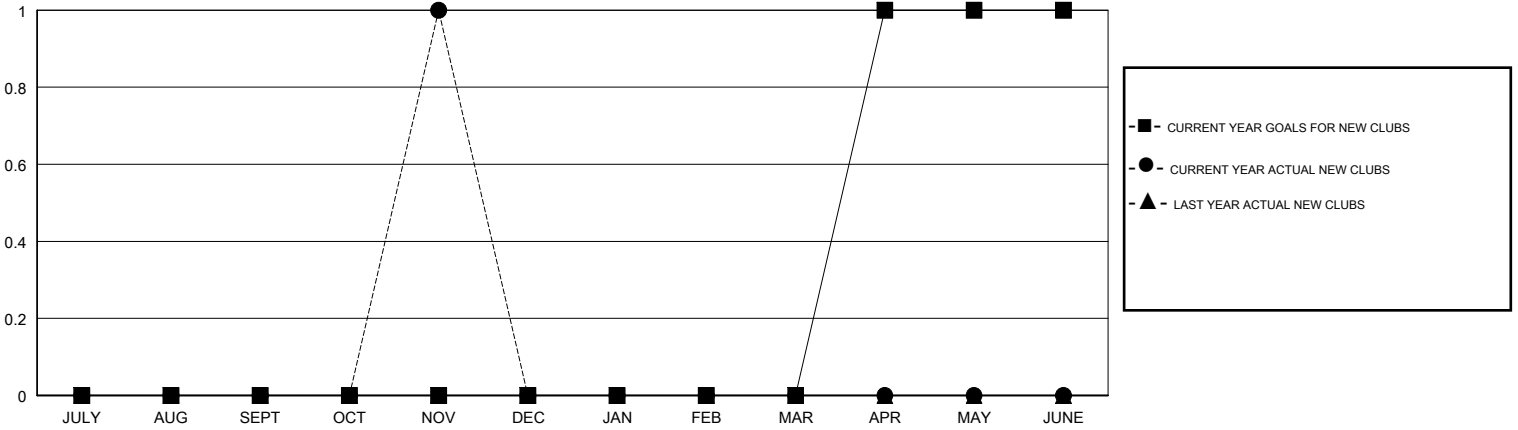
LOCATION VIRGINIA

GMT CA

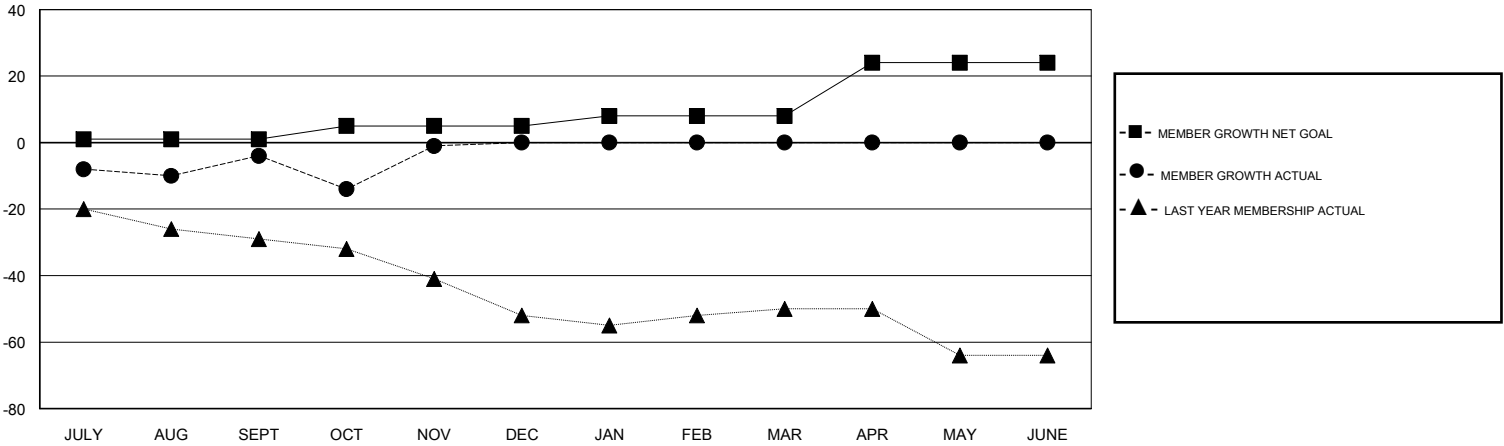
Clubs			
RESULTS FOR 2017-2018			
QUARTER	NEW CLUB GOAL	NEW CLUBS	DROPPED CLUBS
JULY/AUG/SEPT	0	0	0
OCT/NOV/DEC	0	1	0
JAN/FEB/MAR	0	0	0
APR/MAY/JUNE	1	0	0

Members			
RESULTS FOR 2017-2018			
QUARTER	MEMBER GROWTH NET GOAL	MEMBER GROWTH ACTUAL	DROPPED MEMBERS ACTUAL (including transfers)
JULY/AUG/SEPT	1	27	29
OCT/NOV/DEC	4	41	38
JAN/FEB/MAR	3	0	0
APR/MAY/JUNE	16	0	0

GOALS AND ACTUAL NEW CLUBS CUMULATIVE



GOALS AND ACTUAL MEMBERS CUMULATIVE



DROPPED CLUBS: 0	29 CLUBS OF 57 ADDED 1 OR MORE NEW MEMBERS	<u>GENDER DISTRIBUTION</u>	
DROPPED MEMBERS		MALE	912 (65.66%)
DECEASED	10	FEMALE	477 (34.34%)
CLUB CANCELLED	0	Women Percentage Fiscal Year Goal: 35%	
OTHER	57	TOTAL FAMILY UNIT MEMBERS	263
TOTAL	67	FAMILY MEMBERS PAYING HALF DUES	134

[CLICK HERE FOR CUMULATIVE MEMBERSHIP DATA](#)